

GOLD WIRE DRAWING MACHINE

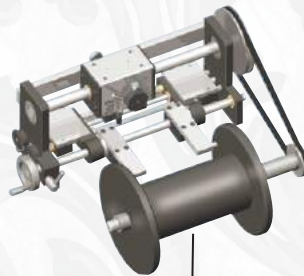
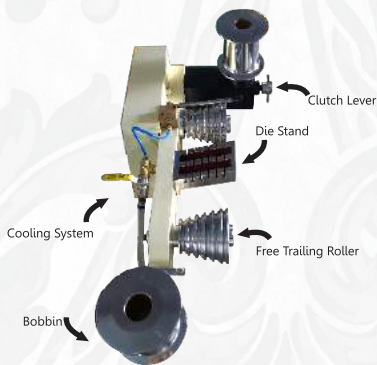
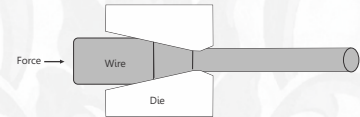
Features

- Heavy Duty Sturdy metal frame that holds the motor.
- Transmission Drive.
- Speed Control Drive.
- Cooling liquid tank and sprayer.
- The unwinding reel.
- The motorized Winding Reel with Adjustable Clutch.
- Steel Platform for longer durability of Machine.

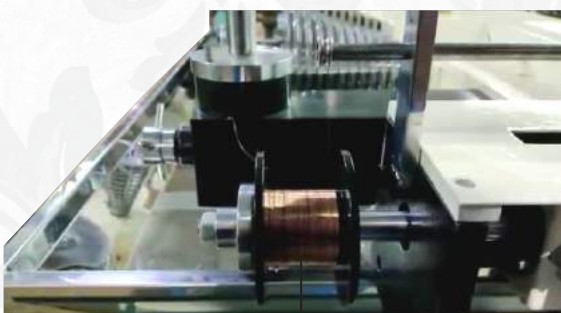
Specification Data

- Max. Wire Diameter (Guage/mm) = 20/0.91 to 18/1.22.
- Min. Wire Diameter (Guage/mm) = 36/0.91 to 36/0.19.
- Main Motor = 1.5 to 2 HP.
- Cooling Motor = 0.25 HP.
- Machine Weight = 225 to 345 Kg.

Principle of Gold Wire Drawing Machine



Motorized Wire Winder



Bobbin

